

# EMMA<sup>®</sup> Capnograph

Portable Real-time Capnography



*Actual Size*

## Measurements



EtCO<sub>2</sub>

End-Tidal Carbon Dioxide



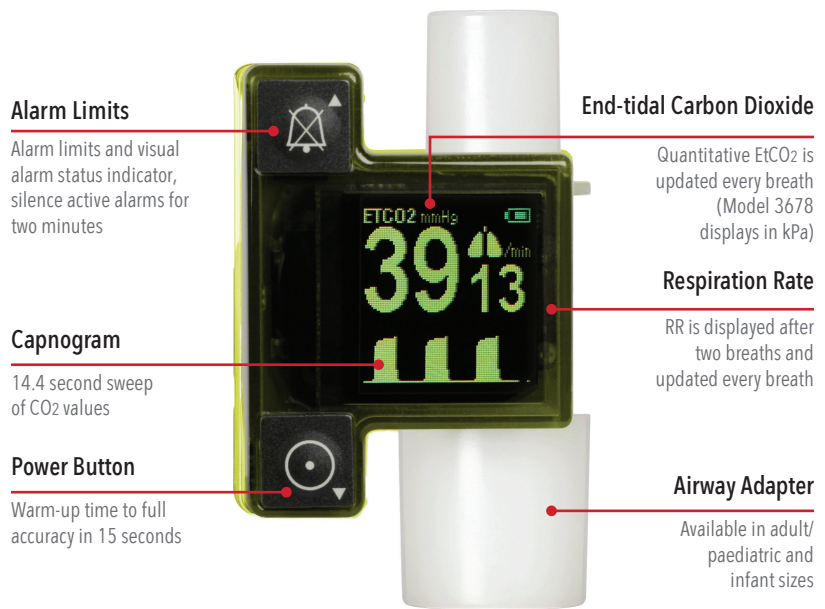
RR

Respiration Rate

- > **Immediate results** – minimal warm-up time, with end-tidal carbon dioxide (EtCO<sub>2</sub>) and respiration rate (RR) measurements and real-time EtCO<sub>2</sub> waveform displayed in 15 seconds
- > **Small, portable capnograph** – lightweight design fits in the palm of your hand for mobility and convenience during short-term EtCO<sub>2</sub> monitoring of adult, paediatric, and infant patients
- > **Designed to fit easily onto a breathing circuit** – flexible use at multiple points of care including pre-hospital, emergency medicine, operating room, intensive care unit, and long-term acute care
- > **Rugged design** for reliable operation in challenging environments
- > **Easy to maintain** – no routine calibration required

## Features

- > Clear, continuous capnogram of carbon dioxide values
- > Simple, easy-to-use interface for quick set-up and one-touch programming
- > Audible and visual alarm system for No Adapter, Clogged Adapter, No Breath (Apnoea), Low Battery and adjustable High and Low EtCO<sub>2</sub> alarm
- > Battery life for up to 10 hours of normal use with two standard AAA lithium batteries



## Performance

RANGES	
CO <sub>2</sub> .....	0-99 mmHg 0-9.9 kPa
RR.....	3-150 bpm
ACCURACY (STANDARD CONDITIONS)	
CO <sub>2</sub> .....	0-40 mmHg ±2 mmHg; 41-99 mmHg 6% of reading 0-5.3 kPa ±0.3 kPa; 5.4-9.9 kPa 6% of reading
RR.....	±1 bpm
BATTERIES	
Type.....	2 (two) AAA Cell Alkaline or Lithium
Battery life.....	6 hours (Alkaline) 10 hours (Lithium)

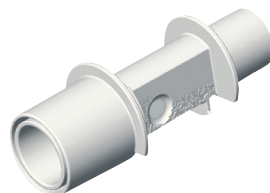
ENVIRONMENTAL	
Operating temperature.....	-5 to 50o C (23 to 122o F)
Operating atmospheric pressure.....	70 to 120 kPa
Operating humidity.....	10-95%, non-condensing
Storage temperature.....	-30 to 70o C (-22 to 158o F)
Storage atmospheric pressure.....	50 to 120 kPa
PHYSICAL CHARACTERISTICS	
Dimensions.....	2.1 x 1.5 x 1.5" (5.2 x 3.9 x 3.9 cm)
Weight.....	2.1 oz (59.5 g) (with Alkaline batteries)
ADAPTER INFORMATION	
Dead space adult/paediatric.....	6 ml
Dead space infant.....	1 ml

## Kit

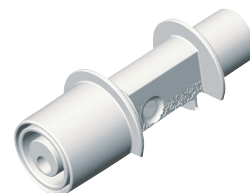


- > EMMA Kit\*  
EMMA (mmHg) PN 3639  
EMMA (kPa) PN 3678

## Accessories



- > EMMA Airway Adapter  
Adult/Paediatric  
Box of 25  
PN 17448



- > EMMA Airway Adapter  
Infant  
Box of 10  
PN 17449

\*In order for the EMMA Kit to provide readings, either of the listed airway adapters is required. Kit includes EMMA, pouch, and lanyard.

For professional use. See instructions for use for full prescribing information, including indications, contraindications, warnings, and precautions.

Masimo U.S.  
Tel: 1 877 4 Masimo  
info-america@masimo.com

Masimo International  
Tel: +41 32 720 1111  
info-international@masimo.com

